

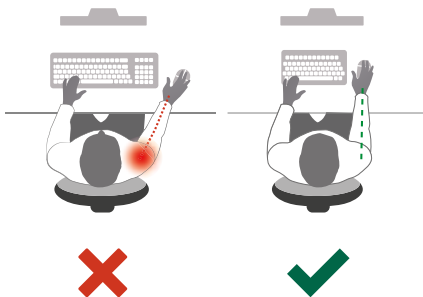
NUMBER SLIDE

User Guide



UK keyboard layout displayed

ERGONOMICS

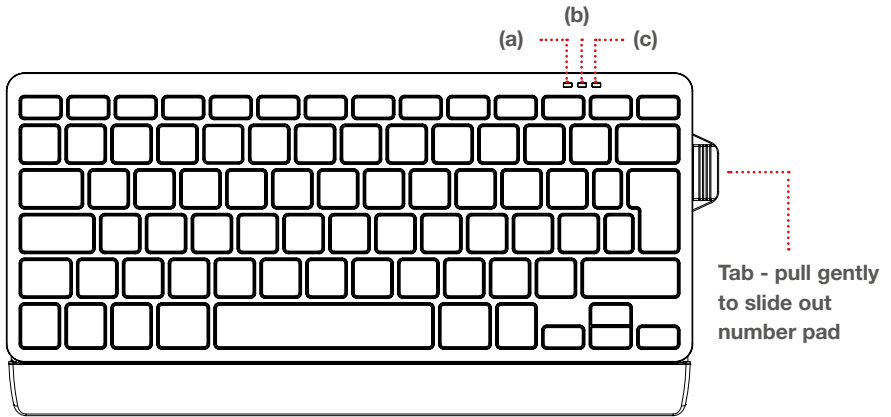


The Number Slide's retractable number pad slides out when you need it and away when you are finished. This feature delivers important ergonomic advantages over conventional standard or mini keyboards.

Compared to standard keyboards, Number Slide reduces the distance you need to reach and use your mouse, which allows you to adopt a more comfortable and suitable posture.

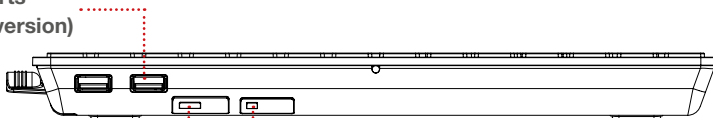
The Number Slide allows your mouse to be positioned in front of your left or right shoulder (depending in which hand you use your mouse), which encourages a good arm/shoulder position when using your mouse.

Being so compact, Number Slide frees up space at your workstation so you can bring work closer to you without compromising functionality.



USB ports

(Wired version)



Power
(Bluetooth version)

Connect
(Bluetooth pairing)



WIRED VERSION

1. Insert USB cable into a spare USB port on your computer
2. There are two auxiliary USB ports on the rear of the keyboard for use with peripherals

Warning lights

- a. Number lock (Number Lock key found on slide out number pad)
- b. Caps lock
- c. Scroll lock

BLUETOOTH VERSION With built in rechargeable Li-ion battery (charging cable included)

To pair with a Windows® PC

1. Turn on Bluetooth via the Control Panel on your PC and search for devices
2. On the keyboard rear edge, slide the keyboard ON/OFF switch to the ON position
3. Press the 'CONNECT' button on the rear edge. The power light should flash until pairing is complete
4. On your PC control panel, select Posturite KB Number Slide
5. To un-pair at any time, simply delete from the list of Bluetooth items

To pair with an Apple® Mac

Please note on Mac the number keys are permanently active, so Number Lock will not operate.

1. Select 'Bluetooth' from the System Preferences menu on your Mac
2. On the keyboard rear edge, slide the keyboard ON/OFF switch to the ON position
3. Press the 'CONNECT' button on the rear edge of the keyboard. The power light should flash until pairing is complete
4. On your Mac's Bluetooth window find 'Posturite KB Number Slide' and click 'Pair'
5. To un-pair at any time, simply delete from the list of Bluetooth items

To pair with an Apple® iPad or iPhone

1. Make sure Bluetooth is turned on on your iOS device and keyboard is on
2. Press the 'CONNECT' button on the rear edge. The power light should flash until pairing is complete
3. In the Bluetooth section on the iPad, select the 'Posturite KB Number Slide'
4. To un-pair at any time, simply delete from the list of Bluetooth items

To pair with an Android® device

1. Make sure Bluetooth is turned on on your Android device and keyboard is on
2. Press the 'CONNECT' button on the rear edge. The power light should flash until pairing is complete
3. In the Bluetooth section on the device, select the 'Posturite KB Number Slide'. If you can't see that name, you will be able to identify it by the keyboard icon.
4. To un-pair at any time, simply delete from the list of Bluetooth items

Please note: If you have difficulty connecting the Number Slide at any time, delete the keyboard from your list of Bluetooth items and start the process again.

Warning lights

- a. Number lock (Number Lock key found on slide out number pad)
- b. Caps lock
- c. Power light - Charge Number Slide when light flashes or remains on

Charging (Bluetooth version)

When voltage is low, the battery light will flash. This means that your keyboard needs charging.

1. Insert the USB end of the charging cable into a USB port directly into your computer (do not use a multi-port hub) and the micro USB end into the back of your Bluetooth Number Slide Keyboard
2. While charging the red LED light will remain on
3. When charged the red LED light will turn off (Approx 2 hours)

Sleep function

After 5 minutes of inactivity the battery will enter a power-saving sleep mode. Press any key to wake up the keyboard.

For up to date support please visit www.posturite.co.uk/numberslide

Models covered by this manual:

9820010 - Wired UK

9820011 - Bluetooth UK

9820012 - Wired US

9820013 - Bluetooth US

FCC Statement

This equipment has been tested and found to comply with the limits for a Class B digital device, pursuant to Part 15 of the FCC Rules. These limits are designed to provide reasonable protection against harmful interference in a residential installation. This equipment generates uses and can radiate radio frequency energy and, if not installed and used in accordance with the instructions, may cause harmful interference to radio communications. However, there is no guarantee that interference will not occur in a particular installation. If this equipment does cause harmful interference to radio or television reception, which can be determined by turning the equipment off and on, the user is encouraged to try to correct the interference by one or more of the following measures:

- Reorient or relocate the receiving antenna.
- Increase the separation between the equipment and receiver.
- Connect the equipment into an outlet on a circuit different from that to which the receiver is connected.
- Consult a dealer or an experienced radio/TV technician for help.

Specifications

Bluetooth Li-ion rechargeable battery.

Bluetooth version: 3.0

System model: GFSSK 2.4G

Working voltage: 3-5V

Working current: 1.5mA

Battery: 300mA/h

Charging voltage: 4.2V

Charging current: 180mA

Charging time: Approx. 2 hours

FCC ID: Y35-9820011

IC: 10227A-9820011

This device complies with part 15 of the FCC Rules. Operation is subject to the following two conditions: (1) This device may not cause harmful interference, and (2) this device must accept any interference received, including interference that may cause undesired operation.

Changes or modifications not expressly approved by the party responsible for compliance could void the user's authority to operate the equipment.

IC STATEMENT

This device complies with Industry Canada's licence-exempt RSSs. Operation is subject to the following two conditions: (1) This device may not cause interference, and (2) This device must accept any interference, including interference that may cause undesired operation of the device.

Le présent appareil est conforme aux CNR d'Industrie Canada applicables aux appareils radio exempts de licence. L'exploitation est autorisée aux deux conditions suivantes: (1) l'appareil ne doit pas produire de brouillage, et (2) l'utilisateur de l'appareil doit accepter tout brouillage radioélectrique subi, même si le brouillage est susceptible d'en compromettre le fonctionnement.



© 2015 Posturite Ltd. All Rights Reserved. Posturite, the logo design, are registered trademarks of Posturite Ltd.

Posturite Ltd, The Mill, Berwick, East Sussex BN26 6SZ, UK
+44 (0)845 345 0010 www.posturite.co.uk