

Vertical Mouse



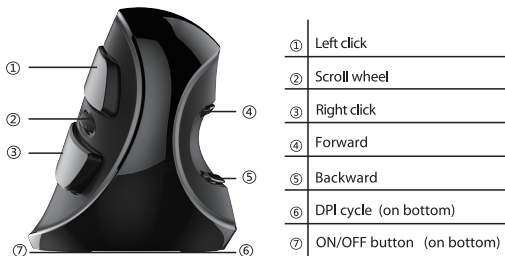
User Manual

Thank you for choosing this special wireless vertical mouse. Please read the user manual carefully when using this product.

►Contents:

- Wireless vertical mouse -----X1
- User manual -----X1
- USB nano receiver -----X1
- Battery (AA#) -----X1
- CD driver (For optional) -----X1

►Button Function:



►Features

- Vertical mouse, worm bionic shape design
- Anti-skidding design and built-in weight
- Ergonomic design with removable palm, reduce hand and wrist pain

► Installation

Plug the USB connector for wired mouse (or USB Nano receiver for wireless version) to the USB port in the computer, after detecting successfully it will work normally.

► Specification

DPI	800/1000/1600, DPI cycle is on the bottom of the mouse
Polling rate	125Hz
Working Voltage	1.5V
Working Current	≤ 16mA

► Battery Installation

1. Open the battery cover.
2. Put the battery into the mouse in the correct direction.
3. Install the battery cover.

Note:

In order to achieve the best economical effect, the intelligent power saving technology is adopted. When your mouse stops moving, it will switch to the power saving mode automatically, and as this time pass, it will use less power.

► Receiver Connection

1. Insert the USB Nano receiver to your computer by USB port.
2. After detecting ok by your computer, the mouse can work normally in ON mode.

► Driver Instruction

1. Installation

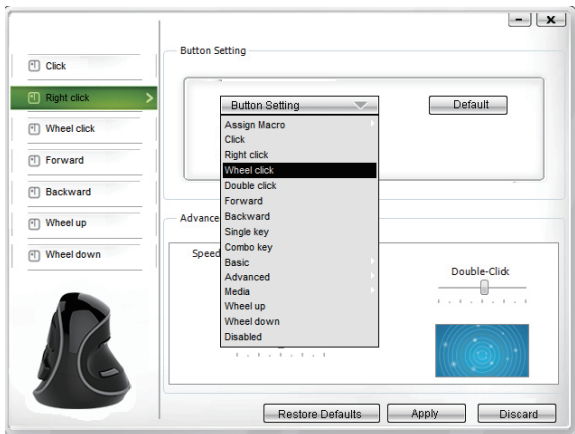
Download the driver from <http://www.deluxworld.com> or the CD in the package, install the driver.

Note:

Please make sure this mouse is already connected to computer when setting the functions in the driver.

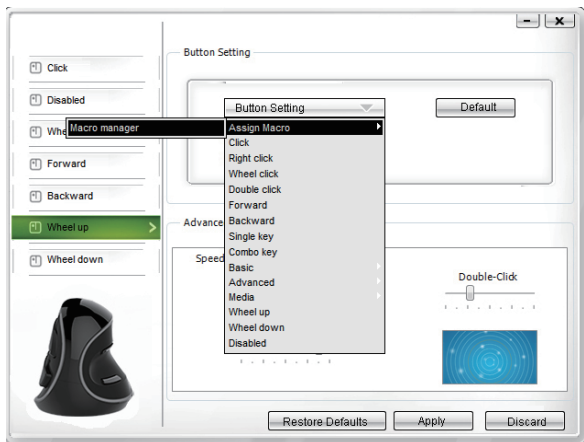
2. Setting

7 functions on the left border can be customized. For mouse function mode, there are more than 12 different basic functions for you to choose.



3. Macro Setting

Click "Assign Macro" to enter into Macro Manager. Click NEW and name the macro, and click "Left Click" on any blank space below Macro Select to confirm the name. Then Start Record, after finishing the record, please click "Stop Record", and click "OK" to save the macro.



4. Other Function

Basic: Cut, Copy, Paste, etc. 8 functions are available.

Advanced: Switch window, Close window, etc. 6 functions are available.

Media: Pre track, Next track, etc. 7 functions are available.

After setting the function, please click "Apply". If you need default functions, just click "Restore Defaults".

► Building Up the Connection Between Mouse and Receiver

If your mouse cannot work normally, you can try to build up the connection again between mouse and receiver, as following steps:

1. Take out the Nano receiver from computer and insert again, it will detect automatically for about 15 seconds.

2. Keep the mouse in ON mode and with battery in correct direction.
3. Keep the effective distance within 10 CM between the mouse and receiver.
4. Press the middle button (scroll wheel) and right button at the same time for about 1~3 seconds, then release it. The connection is being built for about 10 seconds.
5. If cannot build up the connection in 10 seconds, please repeat the above steps.

► Usage Tips

- Please switch ON/OFF button to be OFF mode if you do not use the mouse.
- Please take out the battery if you do not use the wireless mouse for a long time, and keep the battery in a cool and dry place.
- Please do not use the battery if leading, discoloration, distortion or any other abnormality happens.
- It will save more power to use the mouse on the light color media than a dark one.

► Debugging Tips

- Check the receiver if is connected to the USB port.
- Check the ON/OFF button if in ON mode.
- Check the battery if is installed in the correct direction.
- Check the batter capacity if is enough.
- Check the effective distance between mouse the receiver and shorten it.
- Rebuild up the connection between the mouse and receiver.

