

Vertical Mouse



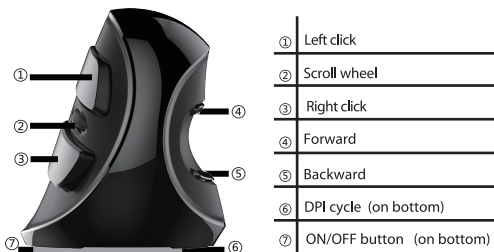
User Manual

Thank you for choosing this special wired vertical mouse. Please read the user manual carefully when using this product.

►Contents:

- Wired vertical mouse ----- x 1
- User manual ----- x 1
- CD driver (Optional) ----- x 1

►Button Function:



►Features

- Vertical mouse, worm bionic shape design
- Scientific ergonomic design with the removable palm rest, to reduce the hand and wrist pain

► Installation

Plug the USB connector for the wired mouse to USB port in your computer, after detecting successfully it will work normally.

► Specification

Solution	PAW3509
Version	Wired
Light Mode	Blue color full-lighted, ON/OFF switch is on the bottom.
DPI	600/1000/1600 DPI,DPI cycle is on the bottom of mouse.
Polling Rate	500Hz
Working Voltage	5V
Working Current	≤165mA

► Driver Installation

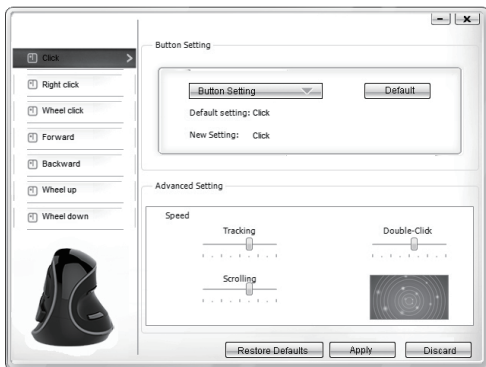
Install the driver from the CD in the package, or you can download it from: <http://www.deluxworld.com>

Tip:

Please make sure the mouse has already been connected to your computer when installing the driver.

► Driver Setting Instruction

After installation ok, get into the setting interface, you can start to set up the mouse function

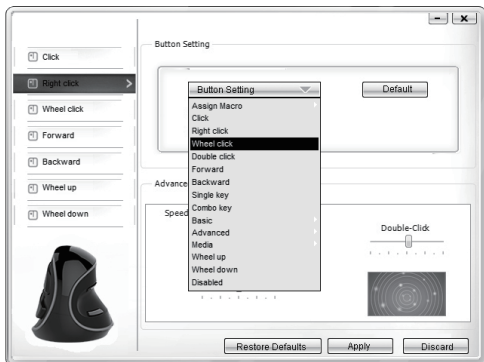


➤ Driver Setting Instruction

After installation ok, get into the setting interface, you can start to set up the mouse function.

A. Button Setting (Custom)

7 functions on the left border can be customized. For mouse function mode, there are more than 12 different basic functions for you to choose.

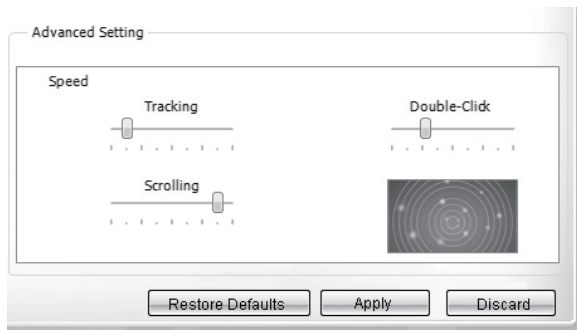


Note:

The function of Left Click cannot be set firstly, only after other button to be set as the function of Left Click.

B. Advanced Setting (Performance)

By adjusting the coordinate, you can set the speed of Tracking, Double-click and Scrolling.



► Macro

Assign a Macro:

- 1) Open Macro on the main interface.
- 2) Choose one existed macro to modify it, or add to create a new one.
- 3) Click “Record” to start the recording, and click “Stop” to finish it.
- 4) You can set the default delay or no delay by choosing Record delay.

