

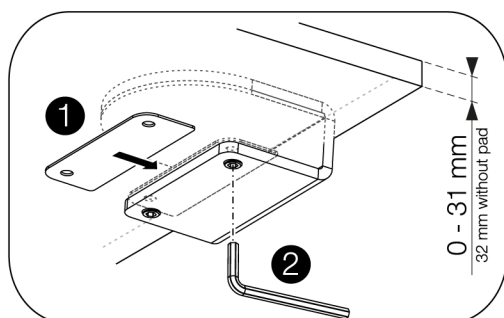
## Monitor Arm OSLO

In order to achieve a correct mounting of Monitor Arm OSLO, you are advised to read and follow the instructions step by step. If there are incomprehensible steps, please let us know and we will get back to you.

### Part Check-List

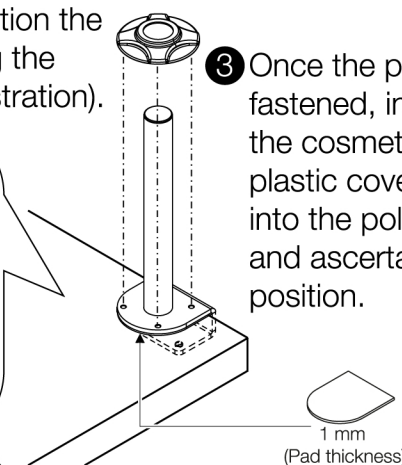
①		x1	⑤		x1
②A		x2	⑥		x1
②B		x2	⑦		x4
③		x1	⑧		x1
④		x1	⑨		x2

① Position and mount the clamp① to the table. For tables thinner than 21 mm, use screws②B. Position the metal sheet③ and fasten it using the screws and Allen key④ (See illustration).



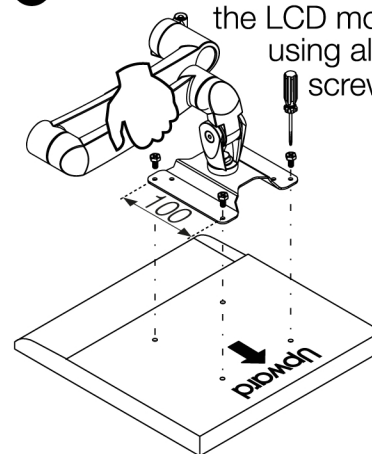
NOTE! For tables thicker than 21 mm, use screws②B.

③ Once the pole is fastened, insert the cosmetic plastic cover⑤ into the pole and ascertain its position.

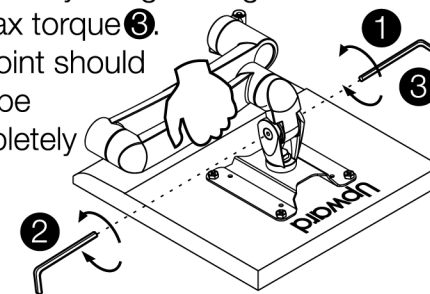


ERGO-MA15

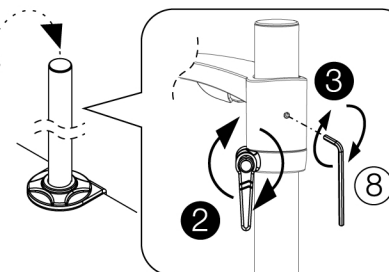
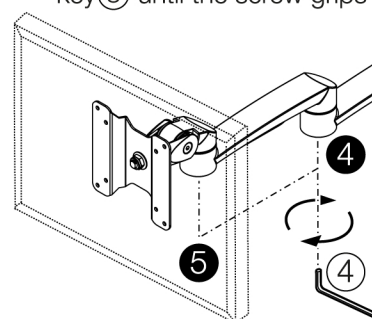
② Attach the monitor arm⑥ to the LCD monitor using all four screws⑦.



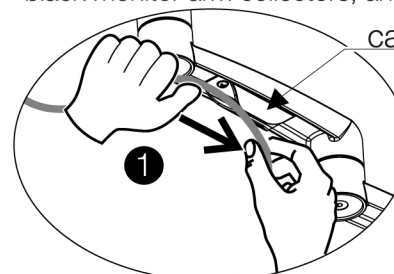
Use Allen key④ to loosen the left screw completely①. Then, tighten the right screw to max torque②. Adjust the angle of the LCD and secure its position by re-tightening the left screw to max torque③. The joint should now be completely rigid.



③ Insert the arm with the fixed LCD monitor onto the pole. Adjust to desired height using the black plastic lever. To make the first arm completely rigid, use Allen key⑧ until the screw grips the pole①. Using Allen key④, tighten the remaining joints to achieve the same result.



④ Finish installation by directing the cables from the LCD monitor through both black monitor arm collectors, and finally both cable clips⑨ as illustrated below.



cable collector

